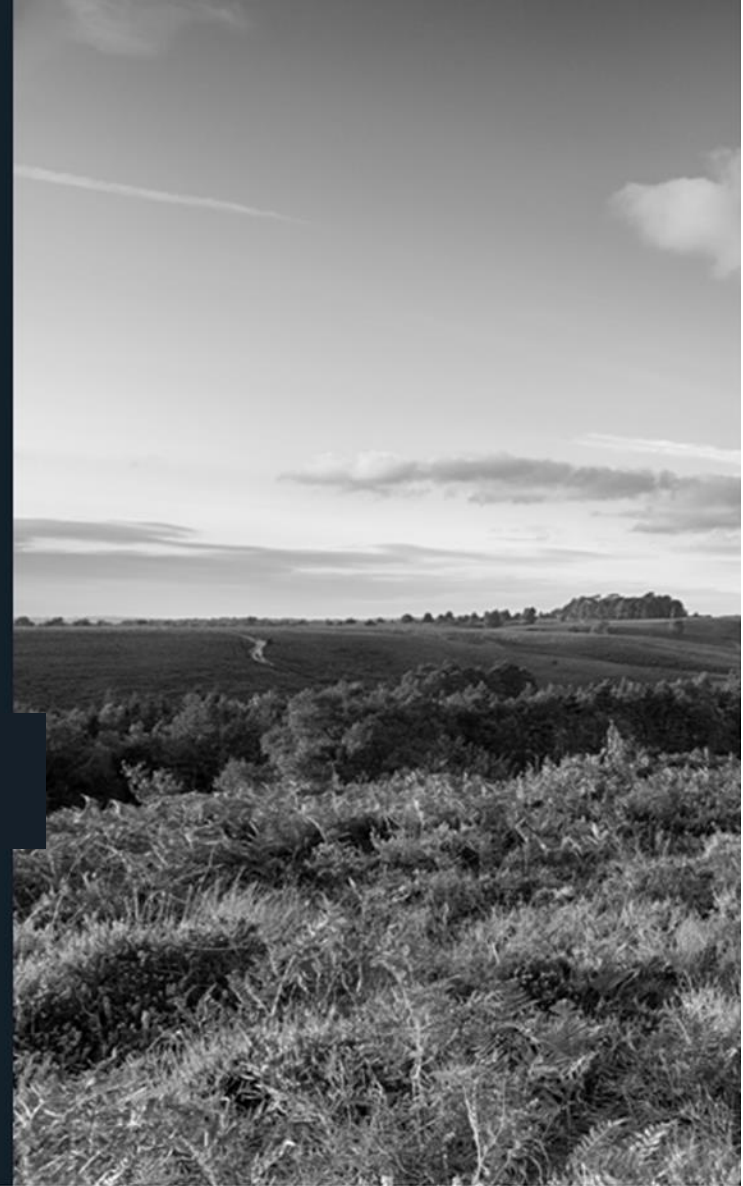


Hampshire County Council Climate Change Strategy

Our Strategic Approach to Climate Change

Chitra Nadarajah

Head of Climate Change and Environmental Strategy





What is Hampshire 2050	Hampshire 2050 Partnership ▾	The commission's work ▾	Six strategic themes ▾	Theme evidence ▾
--	--	---	--	----------------------------------

What is Hampshire 2050?

Following a series of Hampshire 2050 Commission of Inquiry hearings between 2018 and 2019, the Hampshire 2050 Vision was established.

It is a vision for the whole of Hampshire, prepared by expert commissioners and endorsed by a range of partners - The Hampshire 2050 Partnership. For further information on the Commission, see: [More about the commission's work](#).

On November 23 2023, the Hampshire 2050 Partnership was relaunched at a 2050 Summit.

The Leader of Hampshire County Council, Rob Humby, opened the Summit by saying: “no single organisation has the remit, resources and reach to deliver such a wide-ranging Vision alone. The Hampshire 2050 Partnership will give our organisations a solid platform to join the dots between us and our longer-term ambitions even more effectively. It will encourage us to collaborate in different, bold and innovative ways to achieve the outcomes for Hampshire’s residents and places that we’re already striving for.”

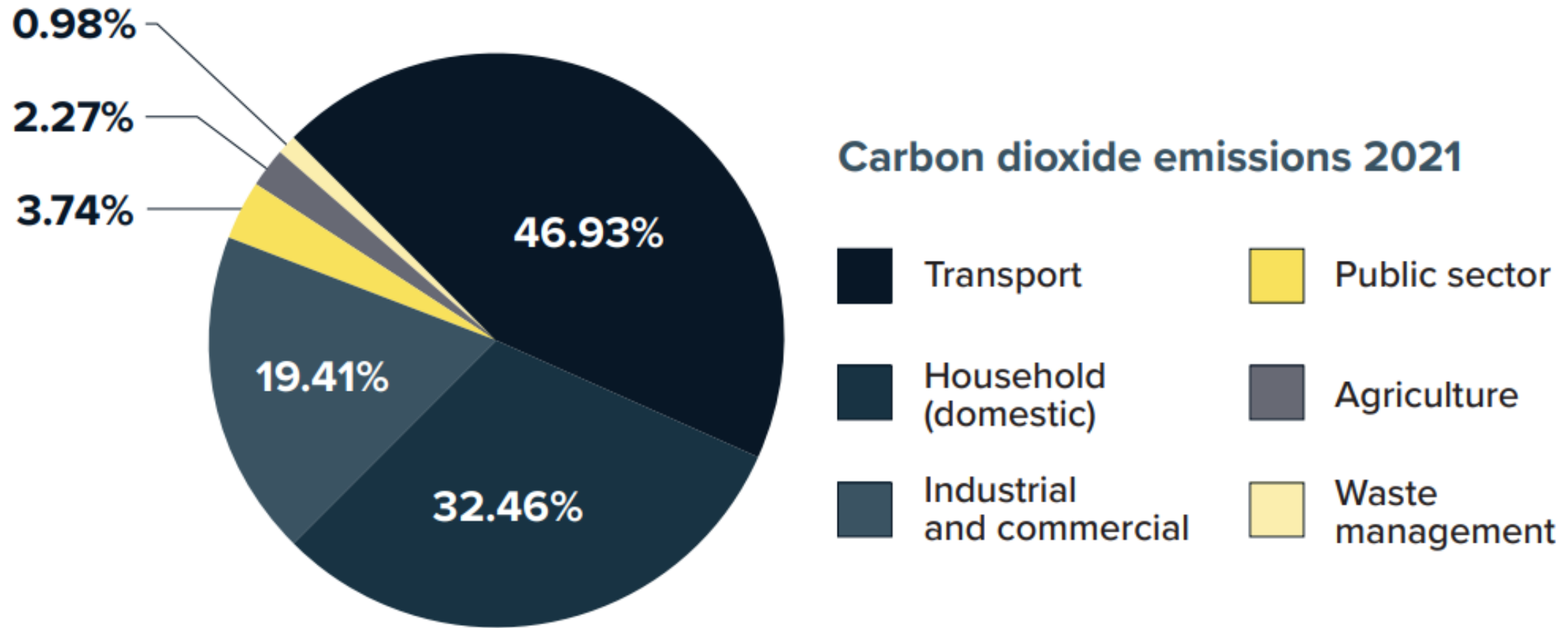
Read the outputs from the Commission:

[Commissioners' Summary Report](#) PDF

[View the Commission video](#)

Evidence-Based Strategy

Baseline Carbon Emissions



Climate Emergency and Targets

Hampshire County Council declared a Climate Emergency in the summer of 2019.

Two targets have been set for the County Council, and these also apply to Hampshire as a whole:

2050

Carbon neutrality

2°C

**preparing to be
resilient to the impacts
of temperature rise**

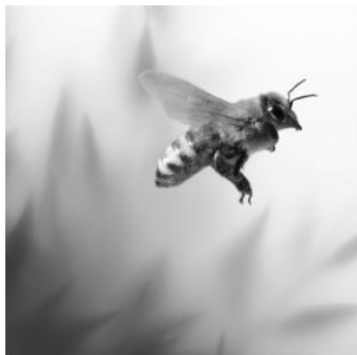
Hampshire County Council set a target to be carbon neutral by 2050, in line with national government. Hampshire County Council also uniquely set a target to build resilience to the impacts of a two-degree Celsius rise in temperature.

This target recognises the critical role we have in ensuring that not only are we resilient and able to continue to deliver our services, but also ensuring that our infrastructure, environment and communities are prepared too.

Hampshire County Council Climate Change Strategy 2020-2025

Our Vision

Recognising the changing climate as the biggest threat, a well-adapted and resilient Hampshire will be essential to ensure that Hampshire's economy, environment, and society continues to thrive and prosper.



Our Policy

Develop and promote a focus on embedding climate resilience and mitigation across key policies and sectors, working with communities across Hampshire.



The Strategy — Key Principles

2. Co-benefits

Within each Strategic Priority, actions that deliver co-benefits will be prioritised. Many actions to reduce emissions and build resilience if done well can deliver multiple benefits for our communities such as reducing congestion, improving air quality, improved health, and economic growth.



Setting Clear Strategic Programmes

Strategic Priorities

- Transport
- Residential
- Buildings and Infrastructure
- Energy Generation and Distribution
- Waste and Circular Economy
- Natural Environment
- Business and Green Economy




Strategic Framework 2020-2025

Climate Change Framework for Strategic Programmes 2020-2025 Carbon Mitigation

These Strategic Programmes have been designed to deliver outcomes to reach our targets in 2050 and are therefore very long term and extensive in nature. As this is the first of the Frameworks to 2025 it mainly focuses on setting the foundations for these longer term programmes. Therefore many of the milestones will go beyond 2025, will overlap in terms of delivery and will be interdependent.

KEY - progress against milestones

Green - good progress	Amber - some progress	Red - minimal progress	Yellow - interdependent action
-----------------------	-----------------------	------------------------	--------------------------------

Key Policy Area	Programme	Key milestones	Progress 2021-2022
Transport 	Local Transport Plan 4	<ol style="list-style-type: none"> 1. Carbon from transport research - Identify measures most likely to achieve carbon reduction. 2. Deliver tranche 2 emergency active travel scheme if bid is successful. 3. All districts to have local Cycling Walking and Implementation plans. 4. Agree new Active Travel design principles and implement. 5. Develop an Electric vehicle strategy and action plan. 6. Deliver Transforming Cities programmes. 	<p>1 - DfT have published a decarbonisation toolkit. Work is also evolving with transport for the South East who are looking to develop a regional centre of excellence also looking at this issue. Across the sector various new assessment tools are also being developed and HCC officers are reviewing which ones may be applicable in a HCC context.</p> <p>2. Complete</p> <p>3. Ongoing</p> <p>4. The plan is to adopt them alongside the LTP4 in Early 2023 subject to DfT LTP4 guidance being issued. In the meantime they are being applied in current practice anyway.</p> <p>5. The Draft LTP sets a good policy framework but in addition to that TfSE have been asked by Government to develop a regional electric vehicles strategy. HCC will be inputting into that. Further to this Government are considering imposing a new statutory duty on Local Transport Authorities. The details of this are to be announced. When they are clear further HCC action will follow.</p> <p>6. Still on track although inflationary cost increases and reduced availability of materials in the construction sector may result in a need for the programme to be extended</p>

Strategic Framework 2020-2025

Strategic Framework of Programmes was developed to tackle the **major strategic gaps** that still existed despite the extensive Action Plan to meet our targets.

Sets out new Strategic Programmes needed for each of the Strategic Priorities.

Key Programme Examples

- Transport – LTP4
- Residential – Greening Campaign
- Environment – Green Finance
- Buildings and Infrastructure – Spatial Framework for Hampshire
- Energy – Local Area Energy Planning
- Business and Green Economy – Retrofit
- Public Health – Health Intelligence



2022 Year of Climate Resilience

What climate change means for Hampshire

The impacts of climate change are already being experienced in Hampshire – flooding, heatwaves, extreme weather. As well as taking action to reduce emissions, we are also adapting to the impacts of climate change so our communities, infrastructure and environment can be better prepared.

Climate change does not just cause physical or financial damage, it can also have much deeper, longer-term effects on health and wellbeing. For these reasons the County Council is not only focused on reducing emissions but also on building resilience.



Increased winter rainfall



Higher temperatures



Sea levels rising



More extreme weather



Increased water scarcity



Natural habitat loss

Working in Partnership

Community Projects

The team have worked with key partners to support community projects to help residents reduce household emissions and become more resilient.



Partnerships and Networks – Local, Regional, National

Hampshire Climate Officers Group (HCOG)

Public Sector Sustainable Development Group (PSSDG)

Hampshire Sustainability and Energy Officers Group (HESOG)

Hampshire and Isle of Wight Planning Officers Group
Sustainable Design Subgroup (HIPOG SDSG)

Hampshire Energy Efficiency Partnership (HEEP)

HAMPSHIRE 2050
VISION FOR THE FUTURE



Local Adaptation Advisory Panel (LAAP)

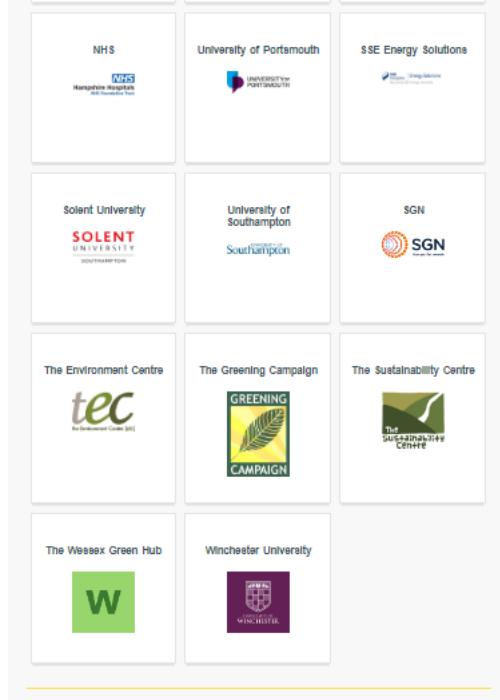
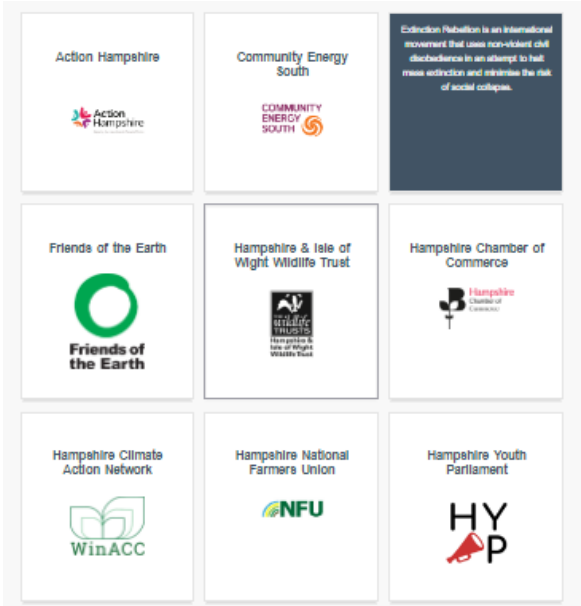


Climate Change Expert Forum

The Expert Stakeholder Forum is made up of more than 20 key organisations that have a significant role in climate change in Hampshire.

This Forum was established to help challenge and inform our approach and help engagement and delivery of actions across Hampshire.

The Deputy Leader Chairs this Forum.



Communications and Engagement

Communications, Marketing, Insights

Dedicated climate change **website**.

Climate change marketing **identity guidelines** which other departments can utilise.

Climate Change Behavioural Insights report:

- Surveyed over 3000 residents - understanding willingness, barriers and motivations for climate-friendly behaviours.
- Calculated carbon savings from 18 behaviours.

Engagement Campaigns – e.g. Swap one to Local

The screenshot shows the Hampshire County Council website. The header includes the council logo, 'Services', a search bar, and 'Sign in' and 'Register' links. The main navigation menu has 'Home', 'Land, planning and environment', and 'Environment'. The page title is 'Responding to Climate Change'. Below the title is a navigation bar with 'Climate Change Strategy', 'Making Hampshire Resilient', 'Who we work with', 'What are we doing?' (with a dropdown arrow), and 'What can I do?'. The main content area is titled 'Hampshire's Climate Change Strategy' and includes a sub-header 'Hampshire County Council declared a Climate Emergency in June 2019.' The text below states: 'The Hampshire 2050 Commission of Inquiry recognised our changing climate as the biggest long-term issue facing Hampshire. Action on climate change is being embedded across the County Council's services, influencing the way decisions are made and policies are delivered in shaping a healthy and prosperous future in Hampshire.' Below this, it says 'Two targets have been set for the County Council, and these also apply to Hampshire as a whole:'. There are two target boxes: '2050 Carbon neutral' and '2°C'. Below the 2°C target is a 'Decide today to Swap One to Local' campaign. The campaign includes a sub-header 'Decide today to Swap One to Local' and a description: 'Swapping one to local is all about finding easy swaps in the everyday things we do. By making one of your regular food shops, or one of your holidays a local one, we can help our local community, enjoy trying something new, potentially save a few pounds and do our bit for the planet. What one will you swap to local...?'. Below the campaign are three icons: 'Local produce' (a strawberry), 'Holiday locally' (a sun and flowers), and 'Second-hand bargains' (a chair). At the bottom, there are two more sections: 'Swap one of your regular food shops to a local shop supplying locally produced food' and 'Did you know'. The 'Did you know' section states: '21% of the UK's food transport emissions are from flying products, such as out-of-season berries, into the UK.' The word 'Juice' is written in a large, green, cursive font at the bottom right.

Youth Engagement

To inform effective strategy for engaging younger people, on climate change to understand :

- what young people are worried about
- what they want us to do to support them
- which actions they may be willing to take, what impact these could have, and how best to encourage action
- the language and channels to approach younger people effectively



155,500

**YOUNG PEOPLE IN
HAMPSHIRE**



- **Environmental education**
- **Protection of green space**
- **Hampshire as a leader nationally**
- **Local initiatives**

Internal Engagement

Climate Change Board

CLIMATE CHANGE BOARD TERMS OF REFERENCE

Updated April 2023

1. Aim

To provide strategic direction to, and enable delivery of, the County's Climate Change Strategy and Strategic Framework to meet the targets of carbon neutrality by 2050 and resilience to a 2 degree rise in temperature, working across the Council and with key partners and stakeholders.

2. Membership

Membership will be made up of officer representatives from each of the County Council directorates, nominated by Directors. Membership will remain flexible to meet the needs of the work programme. Officers may be invited to join or attend on an ad hoc basis according to the agenda. Officers will also be invited on an ad hoc basis to give presentations.

Members/Representatives:

- Director of Hampshire 2050 (Chair)
- Head of Climate Change and Environmental Strategy
- Representative(s) from Hampshire 2050
- Representative(s) from Universal Services
- Representative(s) from Corporate Services
- Representative(s) from Children's Services
- Representative(s) from Adult's Health and Care (including Public Health)

EMBEDDING



Local flood and water management strategy

Hampshire County Council
hants.gov.uk

HAMPSHIRE PORTSMOUTH, SOUTHAMPTON, NEW FOREST NATIONAL PARK & SOUTH DOWNS NATIONAL PARK

MINERALS AND WASTE PLAN: Partial Update – Draft Plan



October 2022



Hampshire Economic Strategy
January 2023



Highway Maintenance Management Plan (HMMP)

Universal Services Directorate



Annual Progress Report
State of Hampshire's natural environment
State of the economy
State of society



SMART LIVING

Minimising waste in Hampshire homes

LTP4 Outcomes



A carbon neutral, resilient Hampshire
Respect and protect Hampshire's environment
Thriving and prosperous places
Healthy, happy and inclusive lives

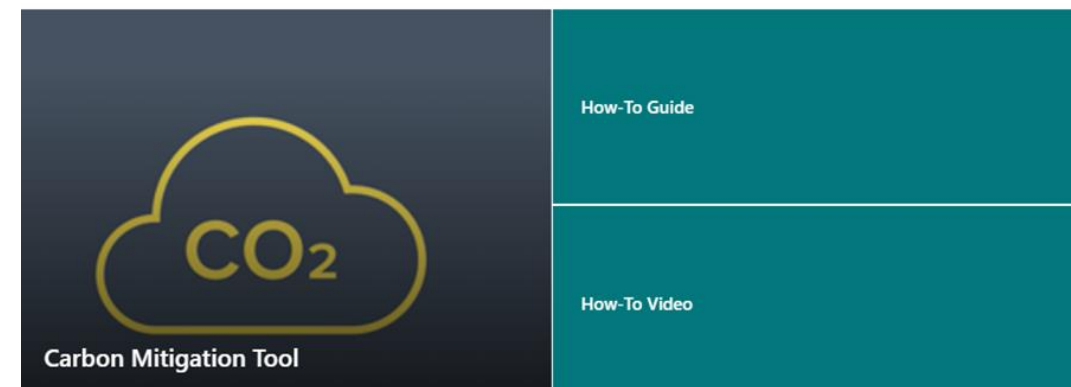
Decision Tools

Climate Change Adaptation Tool:

- Assesses how climate variables, such as extreme weather and flooding, can impact a project/decision.
- Raising awareness about vulnerability to climate change and encouraging users to think about where adaptations could be made to make a project resilient.

Carbon Mitigation Tool:

- Assesses carbon emissions.
- Raising awareness of where emissions are coming from and encouraging users to think about how they could be mitigated.



Monitoring and Reporting

Progress Highlights

Progress on transport emissions and resilience



Transport makes up **37%** of CO₂ emissions in Hampshire



The Local Transport Plan 4 seeks to **reduce our dependency on private cars** by making the alternatives better and cheaper



Secured funding of **£3.4m** towards active travel schemes in the last year



Implemented measures at over 40 locations, enabling people to walk or cycle and supporting the need to **socially distance**

Progress on highways emissions and resilience

Micheldever recycling facility



Highways recycling operations started at Micheldever recycling facility in February 2021

The facility aims to deliver a net reduction in CO₂ of around **67,500kg**, such as by reducing the use of virgin aggregates



The cold recycled road material uses a fifth of the energy of traditional materials and **saves 40%** of CO₂ emissions

Progress on engaging with Hampshire residents

Swap one to local – campaign

coincided with the easing of restrictions to promote local produce, local holidays and second-hand items



over **200,000** residents reached with the social media and Google advert animations



2,451 clicked through to the website after viewing the adverts



over **50%** continued to visit the outbound Hampshire Fayre local produce directory

Building the resilience of highways is a programme and will include:

Identifying and mapping assets most at risk from weather fluctuations

Identifying appropriate material treatment and mitigation measures

Identifying appropriate standards and material capital infrastructure

Embedding life cycle and investment planning across all assets to **optimise resilience of the network**

31 operation resilience schemes to improve drainage systems delivered

105,064

residents informed about the County Council's climate change strategy and the community projects through Facebook videos

12,281

unique views to the climate change webpage

Progress on energy and green economy

Community Energy South scheme



Five community energy groups in Hampshire identified for 'first-steps' business development support

Around **90** attended an online masterclass hosted in May



Working with **Sustainable Overton** on their projects, including technical and financial feasibility and production of a business plan

Other communities will be supported through a bespoke kick-start **mentoring package**



Green Economic Recovery – working with The Economics Foundation

Two priority areas for a green economic recovery have been identified:

- 1 Ways to close the skills gap in construction and home retrofit in Hampshire
- 2 Financing the investment needed to address home energy deprivation, fuel poverty and emissions from homes in Hampshire

Energy

Renewable energy generation and distribution is a new area of activity for the County Council



University of Southampton commissioned to undertake a review of the current and **future energy landscape** for the wider Hampshire area

Supporting delivery of government funded **green homes** grant in Hampshire



Progress on environment emissions and resilience



State of Hampshire's natural environment published in September 2020

A Hampshire Tree Strategy Action Plan is being developed with the Forestry Commission, the Woodland Trust and other partners



Launched the **Parish Pollinator Pledge Project** to improve pollinator habitat and connectivity



In July 2021, it was agreed that the County Council would develop an **Environment Strategy** setting out the County Council's environmental principles and priorities

The Hampshire Spatial Framework was commissioned in March 2021. It will seek to protect and enhance the natural environment



1,351 trees were planted in the 2020/21 season by the arboriculture team. This has the potential to absorb nearly **20,000 tonnes** over the next 20 years



Carbon storage mapping completed for Rushmoor and is in production for Eastleigh and East Hampshire



REPORTING

Climate Change annual progress

Each year a climate change annual report is published to show the progress that has been made across the many programmes and projects underway across the County Council, in line with the Climate Change Strategy, to reduce carbon emissions and build resilience to climate change for the wider Hampshire area, with our partners and communities.

[Climate Change Annual report 2021/22](#)  

[Climate Change Strategy 2020-2025](#)  



[+ Annual progress 2022-23](#)


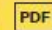
[+ Annual progress 2021-22](#)

[+ Annual progress 2020-21](#)

[+ Hampshire County Council's Climate Change Response - March 2021](#)

Climate Change Action Plan 2020-2025

The climate change Action Plan shows the activity being undertaken by the County Council to reduce emissions and build resilience. It includes all strategic priority areas set out in the Climate Change Strategy including transport, waste and the natural environment.

[Read our action plan](#)  

Framework progress

These focused long-term programmes show the progress that have been made in tackling the main sources of emissions and adapting to climate change across key sectors including transport, energy and residential.

[See our strategic framework](#)  

Links to further information



[Climate Change Webpages](#)

[Vision for Hampshire 2050 Webpages](#)