

WHAT DOES
FAREHAM
LOOK LIKE?
A profile of the Borough

OUR RESIDENTS ARE THE COUNCIL'S CUSTOMERS...

They are at the centre of everything we do. That's why it is important to understand the make-up of the people who live, work and study here. This profile looks at a range of demographic factors, to help give us a picture of who our customers are.

The information presented here is from the latest research available. Some of it is from the 2001 and the 2011 censuses. The census takes place every ten years so although some dates may seem quite old, they provide the latest reliable figures for some of the areas looked at.



FAREHAM IS GROWING



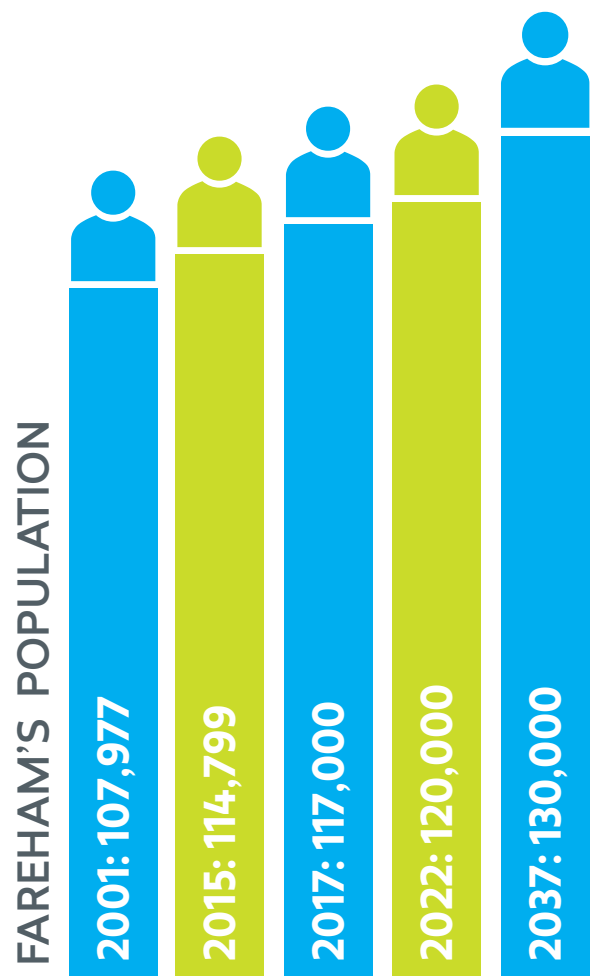
The latest population estimates for Fareham are from 2015 and show a population of 114,799. Like most of the country, the number of people living in the Borough has grown and is predicted to continue to do so albeit at a slower rate than the average for South Hampshire.

A GROWING POPULATION There was a 6% (6,822) increase in Fareham's population between 2001 and 2015.

CONTINUED GROWTH Between 2017 and 2022 Fareham's population is projected to increase by less than 3% from 117,000 to 120,000.

LONG-TERM GROWTH Fareham's population is projected to increase by less than 12% to 130,000 people by 2037.

This growth reflects trends across the country. Our neighbours are growing too. The population of South Hampshire is projected to grow by nearly 186,000 people, a 15.6% increase, to almost 1.4 million by 2036.



WE ARE GETTING OLDER...

80-84
AVERAGE LIFE
EXPECTANCY

Whilst we are growing in number we are also getting older.

Fareham has a typical life expectancy of between 80-84 years old which is higher than the national average of 79-83 years. In fact Fareham has seen the largest increase in residents aged 85+ across the whole of Hampshire. However, life expectancy is 4½ years lower for men living in the most deprived areas of Fareham than for men living in the least deprived areas.

This means the number of people aged 65+ is also increasing. It is estimated there are 26,125 older (aged 65+) residents in 2016 and this figure is predicted to grow by 2% in the next five years. Due to the predicted ageing population, there is likely to be an increase in the number of people with dementia or mobility problems living in the Borough.

AGED
85+

**LARGEST
RESIDENT
INCREASE
ACROSS WHOLE
OF HAMPSHIRE**

+2%

26,125
26,648

AGED 65+
2016
AGED 65+
2021

WE ARE GENERALLY HEALTHY

Generally speaking people living in Fareham are healthier than in the rest of the country. However, there are areas where this is not the case. In 2015 Public Health England identified a number of areas where we are not doing as well:

2,780
CLAIMING
BENEFITS

CASES OF
SKIN CANCER
PER YEAR

HOSPITAL
STAYS FOR
SELF-HARM

THE NUMBER
OF WOMEN
WHO ARE
SMOKERS AT
THE TIME OF
GIVING BIRTH

THE NUMBER
OF PEOPLE
KILLED OR
SERIOUSLY
INJURED ON
OUR ROADS

Another area for local concern is diabetes. According to Diabetes UK, Fareham and Gosport has seen a surge in new diagnoses of diabetes in adults since 2013, with 889 new cases in the area – **one of the highest rises in the UK.**

As of February 2016, there were 2,780 people in Fareham claiming ESA (Employment and Support Allowance), incapacity and disabled benefits. This figure is in line with national trends.

MORE PEOPLE LIVING ALONE...

More of us now live alone in the Borough.

In fact, the number of single person households in Fareham rose from 10,285 (24% of all households) in 2001 to 11,814 (25%) in 2011.

This increase is in keeping with what is going on elsewhere in the country.



2001

10,285
SINGLE PERSON
HOUSEHOLDS

2011

11,814
SINGLE PERSON
HOUSEHOLDS



FEWER WEDDINGS...

2001
62%
MARRIED

2011
55%
MARRIED

Fareham, along with the rest of the country, has seen a steady reduction in the number of married people whilst the number of single people has risen.

The percentage of married people decreased from 62% in 2001 to 55% in 2011.

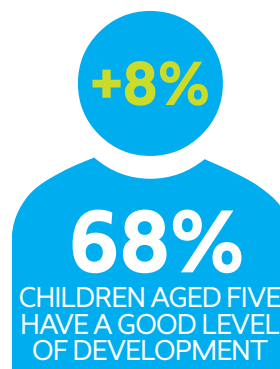
The percentage of people who are single increased from 22% in 2001 to 25% in 2011. This is lower than the average in the South East (32%) and nationally (35%).

WE HAVE A GOOD LEVEL OF EDUCATION

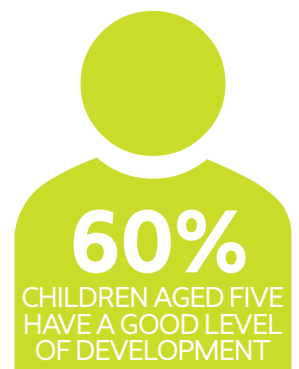
Young people in Fareham generally have a strong start in life. Department for Education research shows that 68% of children aged five have a good level of development against a range of educational, emotional and physical factors. This is significantly higher than the national average which is 60%.

Young people also receive a good level of education locally. An impressive 63% achieved five A* to C grades, including English and Maths at GCSE level in 2014 compared to 59% across Hampshire. In 2015, 63% of Fareham residents achieved a minimum educational level of NVQ3/A Level standard, which is 5% higher than the average for the whole of Hampshire.

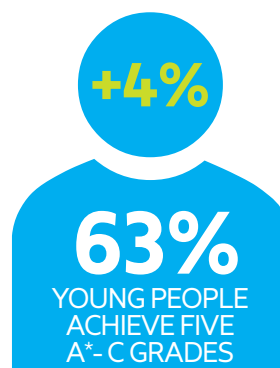
The latest figures from 2015 show that the percentage of residents with a minimum educational attainment of NVQ4, which is equal to a foundation degree, is 37%. This is the same level as Hampshire overall, but almost 3% lower than the average for the South East.



FAREHAM



NATIONAL



FAREHAM



HAMPSHIRE

WE HAVE LOW LEVELS OF DEPRIVATION

The Indices of Deprivation is a piece of research that takes place every five years.

It looks across the country using a range of different factors such as income, education, health, housing, and environment to measure relative levels of deprivation. Local authorities are ranked with 'one' being the most deprived and 326 the least deprived.

Whilst there are low levels of deprivation overall, there are pockets of concern. The table below shows the level of relative deprivation. The lower the percentage figure, the higher the level of deprivation e.g. Fareham Park Area is in the 30% most deprived areas across the whole of England. It is worth pointing out that some of the neighbourhood areas became more deprived between 2010 and 2015 – this is reflected by the percentage decreasing from 50% to 40%.

- Fareham is one of the least deprived areas in the country and is ranked 312 out of 326 authorities.
- Only Hart is less deprived than Fareham in the whole of Hampshire.

AREAS OF DEPRIVATION IN FAREHAM

Area	2010	2015
Fareham Park area	30%	30%
Fort Fareham area	40%	30%
Bishopsfield Road (western side of road)	30%	30%
Town Centre southern & northern part of creek	50%	40%
Stow Estate (west of Highlands Road)	50%	40%

LIFE IN A **SATELLITE** TOWN...

Research carried out by cross party think tank Demos on the relationship between cities and the towns that are located near them, found that Fareham was performing better than Portsmouth on a range of socio-economic indicators.

The research looked at factors such as the health of our residents, employment, crime and educational attainment.

IT'S GETTING **HARDER** TO CLIMB ON THE **HOUSING** LADDER...

It is getting harder for people to buy their first home in Fareham as house prices continue to rise.

The average cost of a property in the Borough increased by nearly £65,000 (31%) in just five years, from £210,974 in 2011 to £275,413 in 2016. Therefore, the income needed for an 80% mortgage in 2016 is £49,505. This is significantly higher than the average annual earnings of £27,560 for a full time worker in Fareham.

The affordability of housing is an issue for our neighbours too. Research from 2013 showed that 44% of existing households in South Hampshire were unable to afford market priced housing. This is expected to increase to 53% by 2036.

Figures from the last census in 2011 show that the percentage of social housing in Fareham was 8%. This is considerably lower than the national average of 17.6%.

+31%

2011

£210,974

AVERAGE HOUSE PRICE 2011

2016

£275,413

AVERAGE HOUSE PRICE 2016

WE ARE SLOWLY GETTING MORE DIVERSE

Fareham has only experienced a relatively small increase in the racial diversity of its residents in recent years. This small change can be seen when looking at the 2001 and 2011 censuses:

- The percentage of people who identified themselves as white British decreased slightly from 96% in 2001 to 95% in 2011.
- Just over 2% of residents identified themselves as white non-British with the rest of our residents being made up of small percentages of various ethnic groups.

RELIGION IS STILL IMPORTANT TO MANY RESIDENTS...

The latest figures, from 2011, show that religion is important to many of our residents. Christianity remains the largest religion in Fareham.

The number of people who said they were Christian was 64% in 2011 which is about 4% higher than England as a whole. However, this was a 14% drop from those who said the same in 2001.

In contrast to the reduction in people identifying themselves as Christian there has been an increase in the number declaring no religion. The increase is from 14% in 2001 to 27% in 2011.

Faiths other than Christianity in Fareham are relatively small. In 2011 there were 274 Buddhists, 299 Hindus, 63 Jewish, 538 Muslim, 79 Sikh and 508 people with other religious beliefs.

64%
CHRISTIAN
FAREHAM 2011

This document provides a profile of the Borough of Fareham. It is intended to be read both as a standalone document and in conjunction with the Council's Corporate Strategy.

There are three documents in total that make up the Corporate Strategy. These are:

Corporate Strategy

What does Fareham look like?

Achievements 2011-2016

**All documents are available from the Council's website:
www.fareham.gov.uk/corporatestrategy**

