

FAREHAM

BOROUGH COUNCIL

Report to the Executive for Decision 03 September 2018

Portfolio:	Policy and Resources
Subject:	Daedalus Gate Guardian
Report of:	Head of Leisure and Corporate Services
Corporate Priorities:	Leisure Opportunities for Health and Fun

Purpose:

The purpose of this report is to advise members of a proposal to erect a landmark piece of public art, known as a Gate Guardian, by the Peel Common roundabout at Daedalus. It will then seek approval for funding of the project through developer contributions.

Executive summary:

Since the purchase of Daedalus from the Homes and Community Agency in 2015, the site has become the largest employment site in the area and is a hub for aviation, education, engineering and innovation. There has also been growing community involvement at the site.

As part of IFA2 project National Grid agreed to fund a package of community facilities at Daedalus, such as a play area and a large area of open space, known as Daedalus Common. In addition to attracting businesses, this open space will provide many benefits for the local community to enjoy.

These developments are giving Daedalus a unique character, and public art is a proven way to provide a landmark that encapsulates the character of a site and promotes its brand. It can also help to attract businesses and enrich local communities.

A contribution of £100,000 has been secured through the Section 106 Agreement with the National Grid for the provision of large pieces of public art, known as gate guardians.

There is now an opportunity to create and site a large gate guardian, on Daedalus Common, in a visible position, by the busy Peel Common roundabout.

The guardian would be on land that would accommodate public open space, so would be accessible to all. A proposed design, based on the Greek myth of Daedalus has been developed. The design complements the Daedalus brand, and would provide an inspiring landmark that would be associated with the site for generations to come.

Recommendation/Recommended Option:

It is recommended that the Executive agrees:

- a) to erect a large and distinctive piece of public art known as a 'Gate Guardian' at Daedalus; and
- b) a budget of £100,000, to be paid by developer contributions from National Grid.

Reason:

To create a distinctive landmark, that would promote the unique Daedalus brand to visitors, businesses and residents.

Cost of proposals:

The total cost of the project would be £100,000. Funding would be provided by National Grid as part of package of community facilities at Daedalus.

Appendices: **A: Proposed Project Budget**

Background papers: None

Reference papers: None

FAREHAM

BOROUGH COUNCIL

Executive Briefing Paper

Date:	03 September 2018
Subject:	Daedalus Gate Guardian
Briefing by:	Head of Leisure and Corporate Services
Portfolio:	Leisure and Community

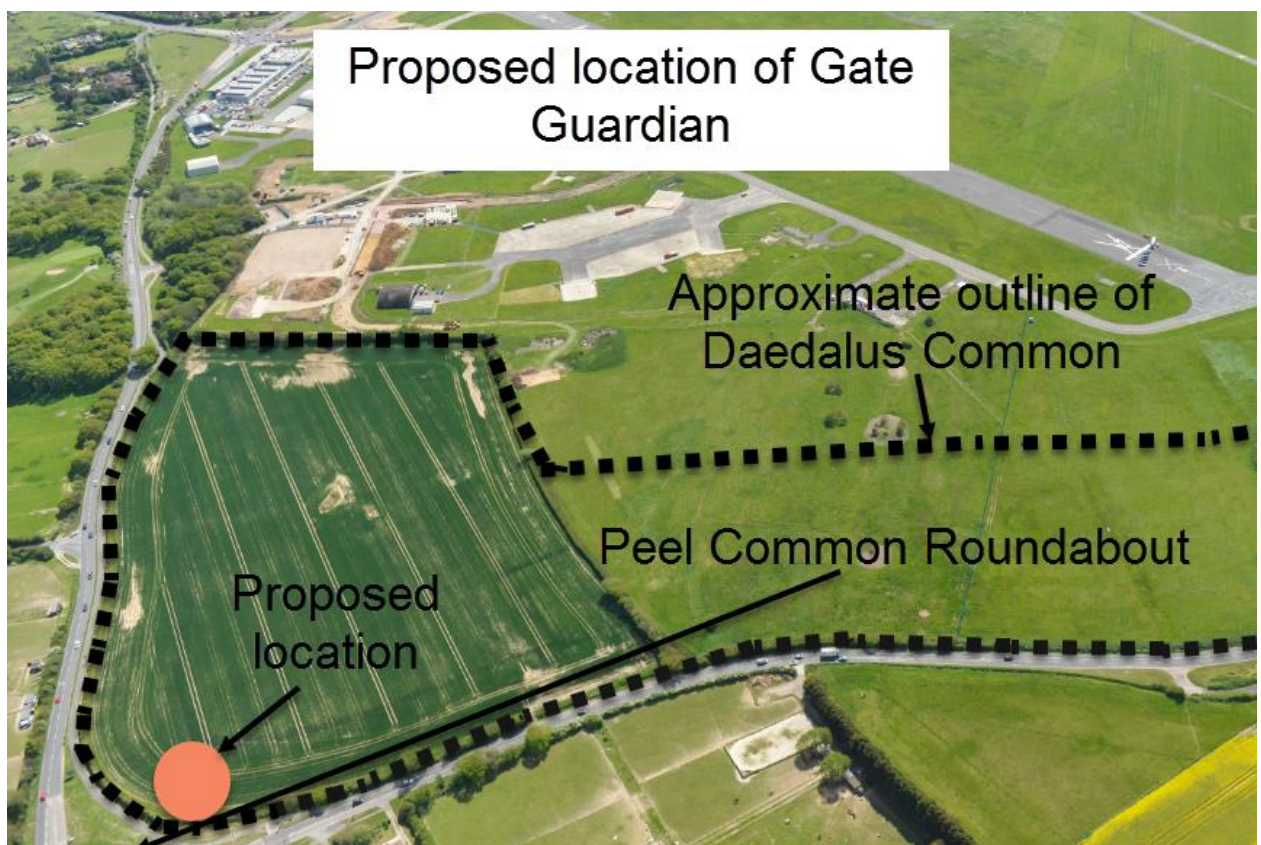
INTRODUCTION

1. This report outlines the proposal to erect a landmark piece of public art, known as a Gate Guardian on Daedalus Common by the Peel Common roundabout at Daedalus. It will then seek approval for funding of the project through developer contributions.

Background

2. Since the purchase of Daedalus from the Homes and Community Agency and the adoption of the Council's Vision for Daedalus in 2015, the site has become the largest employment site in the area. It is now arguably the premier centre of excellence for aviation, aerospace, marine and advanced engineering businesses in the south.
3. The number of businesses located at the site continues to grow. An important attraction to employers and their workforces is the upcoming provision of an area of public green space in the northern most part of Daedalus, known as Daedalus Common. National Grid was granted planning permission on 17 November 2017 for the provision of this open space, as part of a package of community focused improvements linked to the IFA2 (interconnector) project.
4. In addition to attracting businesses, Daedalus Common will provide many benefits for the local community to enjoy. Landscaping will help screen the views of key buildings using leftover spoil from the construction project. In addition to that, 30,000 native trees, both new and mature, are being planted, and new footpaths and cycle-ways will allow connections with the Alver Valley.
5. These developments are giving Daedalus a unique character and brand. It has become not only a renowned hub of aviation history, but a site of continued innovation, educational excellence and economic success. These elements have also contributed to an increasing level of community involvement with the site, as evidenced by the sell-out Daedalus 100 celebrations in 2017 and the planned D-Day 75 commemorations taking place in the Solent Airport at Daedalus in 2019.

6. There is now the opportunity to celebrate and promote the site by creating a landmark that symbolises its unique character and brand, and provides visitors, residents and businesses with a sense of arrival at Daedalus. An effective and proven way to do this would be through the creation of a large and distinctive piece of public art.
7. Ambitious public art is seen by many as a key component of placemaking, encouraging people to visit, gather and socialise in public spaces. Good public art can also improve the aesthetics of an area and enhance a sense of community pride, ownership and a unique sense of place.
8. Examples such as the Angel of the North and the Spinnaker Tower have become internationally recognised landmarks. Whilst they may have been considered controversial by some early on, they have become well loved by residents and are symbols of their communities, of which they are proud.
9. A similarly ambitious project at Daedalus could come to symbolise the site's history, success and ambition with the potential to become a nationally recognised landmark for the whole of Fareham for generations to come. A contribution of £100,000 was secured through the Section 106 Agreement with National Grid for the provision of large outdoor sculptures, known as gate guardians. The specific aim of this funding is to promote Daedalus as an attractive site to businesses.
10. Considering this unique opportunity, Officers approached several local artists requesting designs for a large gate guardian. It would be installed on Daedalus Common next to the Peel Common Roundabout (see image below). This location was chosen as it is the main 'entrance' to Daedalus and has thousands of vehicles passing by it daily.

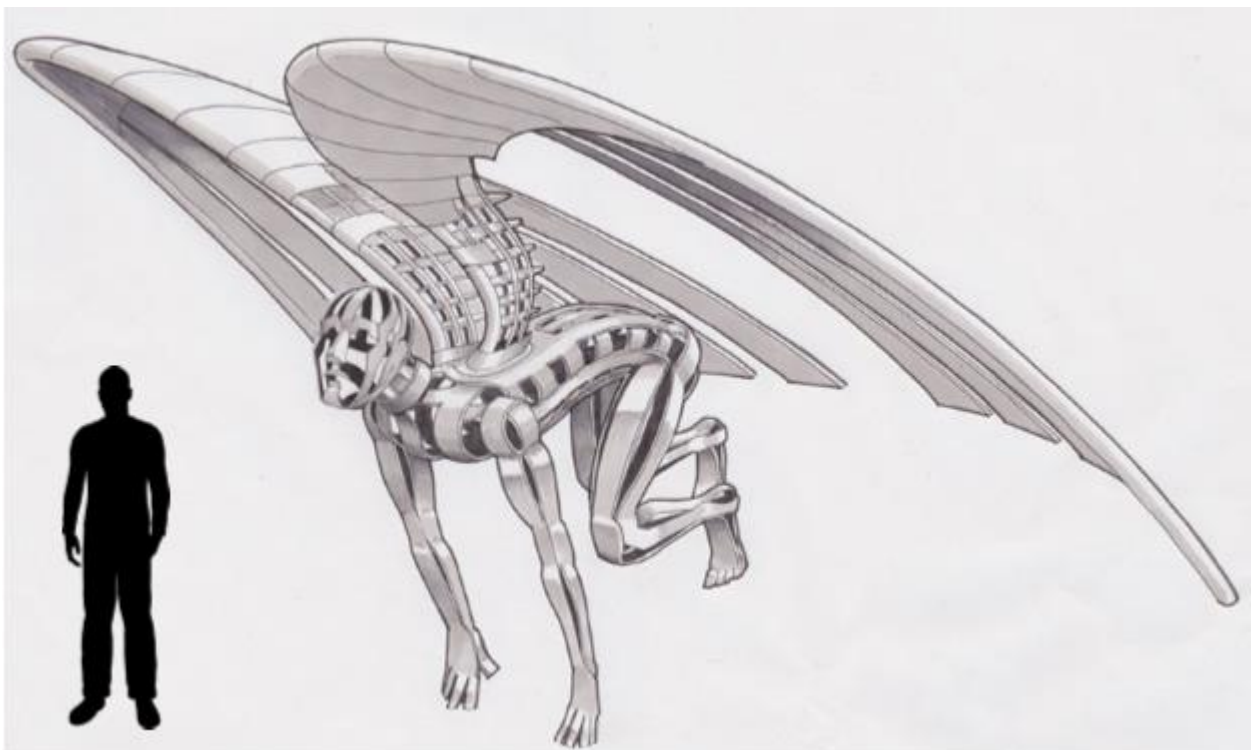


11. When developing their proposals designers were asked to take into account a number

of considerations:

- **Setting:** Daedalus Common is a large area of open space that will be landscaped to appeal to walkers, cyclists, families and visitors interested in viewing aircraft. This area is visible from Peel Common roundabout and, for people travelling from the direction of Fareham, it will be the first part of Daedalus they will see. Height will be particularly important as the sculpture will need to stand tall so that it is easily visible from the road.
 - **The Daedalus Brand:** The new sculpture would have to reflect the site's new identity and, at the same time, provide a visual reference to the Council's vision for Daedalus.
 - **Story:** The sculpture should provide a story that is easily relatable but which also respects Daedalus' position as a hub for innovation, engineering and aviation.
 - **Safety:** As the sculpture is intended to be publicly accessible then safety would have to be incorporated into the designs. It would also have to be constructed of materials that would not create any glare for passing aircraft from the air, or vehicles on the road. It would also need to be robust enough to deal with the windspeeds on site.
 - **Longevity:** The designs would need to be maintenance free and constructed in a material able to withstand the elements and still look good for generations to come. The site's coastal location also needed to be considered, particularly how that might affect the longevity of the sculpture and potential layers of dust and dirt caused by busy roads.
 - **Audiences:** The design would also need to consider the different people who would view the guardian:
 - Members of the public of all ages who may be passing through or staying for a period
 - Visitors who are considering relocating their business to Daedalus
 - Visitors who are considering start-up premises at the Fareham Innovation Centre
 - Interested parties connected through Enterprise Zone status
 - Parents of and potential students at the college
 - Residents in the area
12. Overall, the gate guardian would need to instil pride in the community, be aspirational and be in keeping with its surroundings.
- 13. The preferred design**
14. A number of proposals were received, however there was only one that was considered by officers to have met all the criteria outlined above. The preferred design was provided by artisan blacksmith Peter Clutterbuck and his designer Nigel Searle who have worked with the Council on a number of successful projects including the Falklands Arch in the town centre and the Vannes 50th Anniversary Twinning sculpture in Westbury Manor.
15. The designer has provided a description of the inspiration behind the design, which is based on the Greek myth of Daedalus.

16. *“Daedalus made wings for his son, Icarus, and himself so that he could escape the island of Crete, where he was being held captive to prevent him from revealing the secrets of the labyrinth that he had designed. As we know, the ill-fated Icarus flew too close to the sun, fell into the sea and drowned, but Daedalus flew to safety. Daedalus was grief stricken at the loss of his son, but the goddess Athena was impressed by his ingenuity and courage and gave him real wings with the power of flight....”*
17. *The sculpture represents Daedalus about to take flight for the first time. The figure is poised, muscles taut, ready to leap and spread its wings, his head lifted, with eyes toward the sky. The sculpture also pays homage to the airfield itself. The wings are spread in symmetry and are partially constructed to represent the framework of an aircraft wing. Smooth sheet metal tightly covers the top of the wing, creating a streamlined profile that suggests flight may be possible, but the sculpture’s wings remain firmly grounded in the earth in contrast to the figure’s pose to take flight, reminding us of man’s struggle to take to the air and the inability of man, himself, to fly. The sculpture also represents hope and a new beginning for the old airfield, after all, Daedalus has new wings and is about to fly for the first time!”*
18. The above description could also be at the site of the gate guardian to help visitors to understand the thinking behind the design below.



19. The guardian would be eye-catching and imposing in size and clearly visible from the Peel Common roundabout. The guardian itself would be approximately 3m high and is drawn above next to an average sized man for scale. It would sit on a large grass mound, most likely made from leftover spoil from the converter station. It would complement the open space setting well and be the key point of interest within it.
20. Constructed of galvanised steel, it would be both strong and able to withstand the elements, whilst also being aesthetically pleasing. The steel would also help ensure

that there was no glare to distract pilots flying overhead on sunny days. The guardian would be secured to the mound using steel and concrete foundations.

21. The guardian would be in a public open space and people would be able to reach it and interact with it via a pathway. Therefore, safety has been incorporated into the design, with no sharp edges and wings set at a steep angle to make climbing difficult.
22. It is clear that the design has an emotional impact and interesting backstory. It also matches the Daedalus brand and reflects the Council's commitment to aviation, innovation and engineering at the site. The scale, story and inspiring design of the proposed gate guardian would help it become a nationally recognised landmark allowing visitors to know that they had arrived at Daedalus.
23. **Project Budget**
24. The total cost of the project would be £100,000 (see appendix A for more detail). As mentioned earlier in the report, National Grid is funding a package of community facilities at Daedalus, and the gate guardian project would form part of this package.

25. Next Steps

If approved, more detailed designs would need to be worked up, and planning permission would then need to be sought. The timescale for the construction and installation of the gate guardian will be dependent on the progression of the creation of Daedalus common. Early works have started on the site and are predicted to be completed by the end of 2020.

Enquiries:

For further information on this report please contact Lindsey Ansell (Ext 4567)