

Statement Against Appeal  
APP/A1720/W/21/3271412 Romsey  
Avenue, Fareham

Gillian Marshall

10<sup>th</sup> August 2021

# Introduction

Proposed development to the fields causing untenable pressure to:

- Residents
- infrastructure
- the environment

Explore recent Areas of Special Quality Landscapes designation.

# Background

Fareham's current local plan 2010 - 2026 :

- Portchester's allocation is 57 Dwellings due to lack of facilities
- To date 271 dwellings built/received planning permission
- Dwellings represent a 200% increase over allocation
- No material improvements to Portchester's facilities have been made

# Pressure on School Places/children & families

- 70% (190) of new dwellings are in Wicor Primary Catchment
- Of all schools, only Northern Infant has increased places, adding 15
- No known plans to increase capacity of other schools
- Parents travelling to Gosport and Portsmouth for school places
- FBC/Hants CC not meeting the requirements of NPPF paragraph 95
  - Must be sufficient choice of school places to meet needs of existing and new communities.
- Traffic has increased to a point where children are not able to make local friends and attendance at out of school clubs is impacted.

# Pressure on Recreational Land

- Signs erected to remind visitors to be considerate to sensitive coastal area
- Very frequent refuse collection, yet bins overflow
- Litter picking volunteer groups recently set up due to concerns over conditions on shoreline
- New development at Southfields, Cranleigh Road has not delivered promised public open space

# Looking out for coastal birds



**Do you enjoy seeing wildlife thrive here?**

lots of different birds call Fareham Creek their home. The mud that appears at low tide provides an excellent place to feed...



Please keep  
to the footpath  
and keep dogs  
under control









Cranleigh Road "Nature Area" 2021



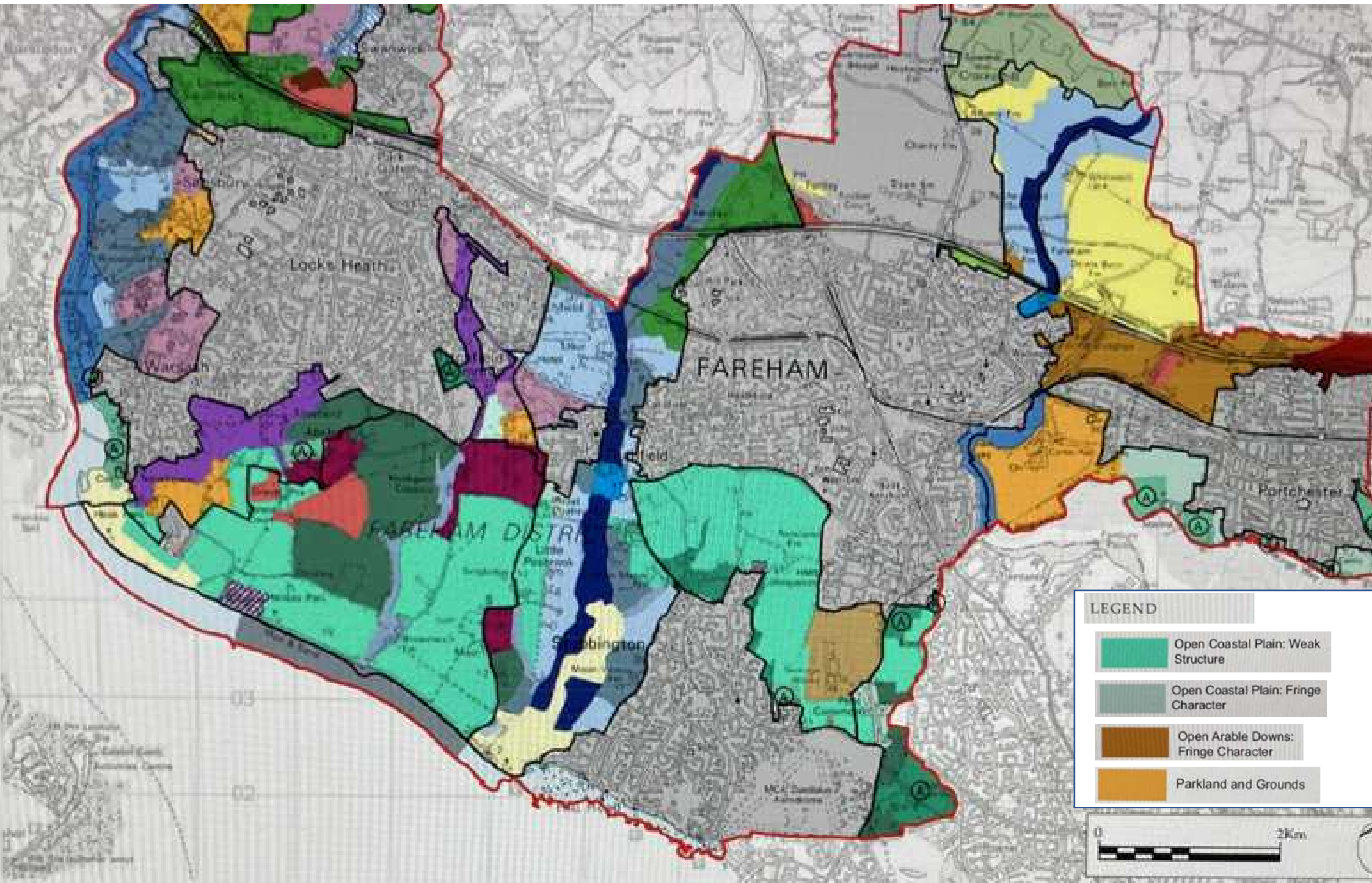
Cranleigh Road "Public Open Space" 2021



Cranleigh Road "Public Open Space" 2021

# Pressure on Agriculture and Countryside

- wildlife displaced and disappearing
- Concerns over viability of fields to south and west of Romsey field – in total potential 40 hectare loss
- FBC policies and NPPF state that remaining best agricultural land should be preserved
- Since 2011 a significant loss of around 137Ha of best agricultural land in Fareham
- Potential loss in Portchester of around 100Ha if all agricultural land proposed for development is allowed.





# Landscape Review 2017

- 1996 & 2017 Landscape Reviews 40Ha fields designated as countryside.
- 2017 review did not consider community opinions on landscape value – openness and countryside feel very important to locals and visitors
- 2017 review inaccurately stated fields had “no direct connection with coast” but creek can be seen from Romsey and fields visible from creek
- Stated some development acceptable – with specific constraints and mitigation







Views of countryside fields and Portsdown Hill





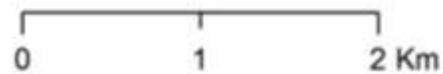
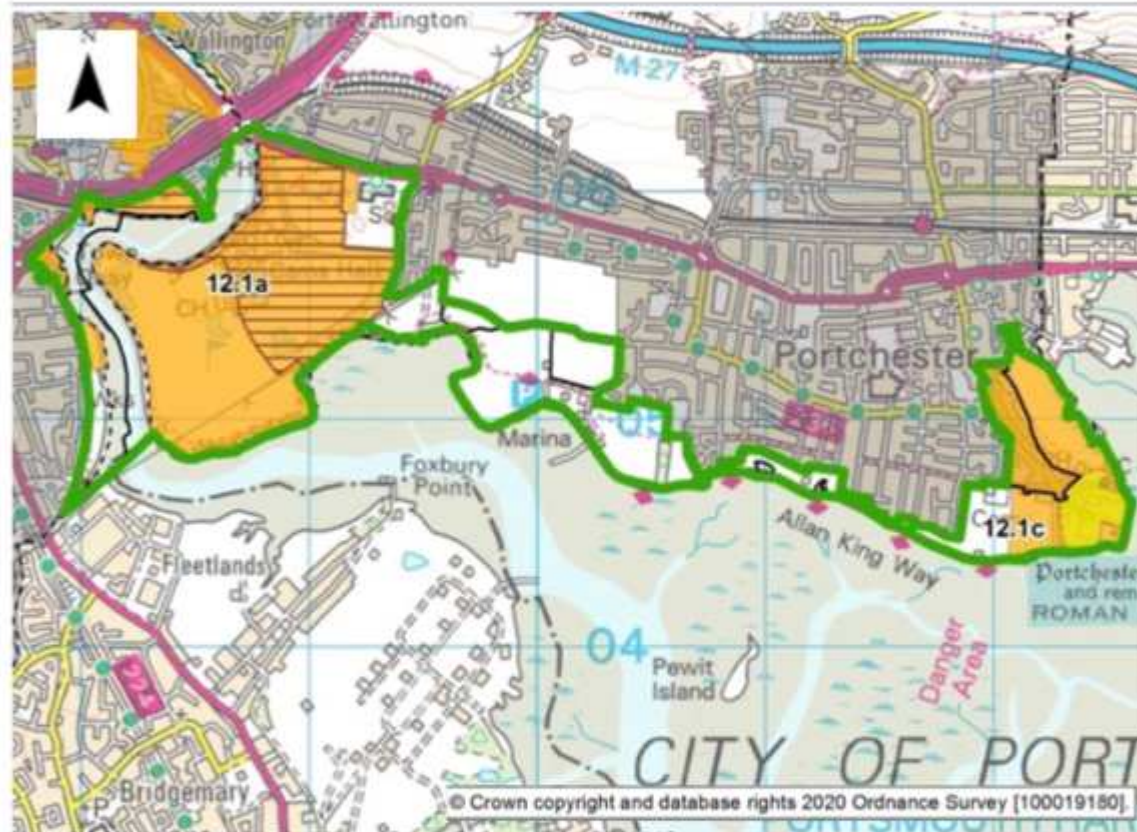
Views of Cams Lake taken from a rear garden of Romsey Avenue



# Areas of Special Quality Landscape Review 2020

- New ASLQ (8) proposed for Cam to Portchester Coast – valued landscape
- Area described as relatively; high tranquility, secluded and peaceful, urban edge intrusion minimised by woodland
- Only detractor was residential and commercial development by coast. BUT
- Excludes Romsey and west field (apart from 50m swathe near coast) – decision not consistent with methodology applied to rest of ASQL 8
- If adopted, urban edge moves to coast.

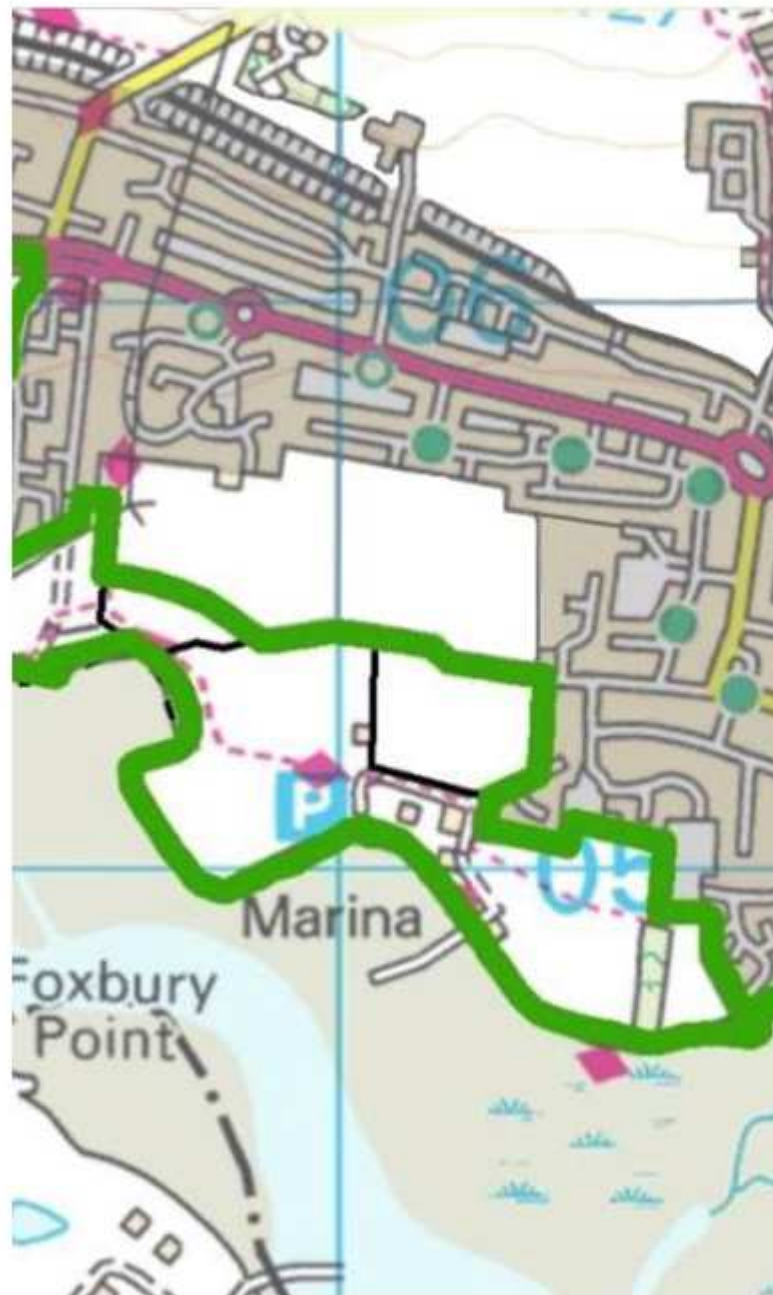
# Chapter 3: Area of Special Landscape Quality ASLQ 8: Cams to Portchester Coast



### Legend

- Proposed ASLQ boundaries
- Original ASLQ boundaries
- LCA Sub Areas
- Historic Parks and Gardens
- Scheduled Monuments
- Conservation Areas
- Urban Areas
- Fareham District Boundary

Close up of the ASQL boundary excluding most of area 12.1 b



# Final Remarks

- Government minister states support the protection of green spaces
- To maintain natural environment for next generation
- Current planning system not trusted – weighted in favour of big constructors to the exclusion of local people

Please refuse this appeal on the many valid, material grounds that you have heard or will hear today. Thank you