

Local Government Boundary Review

Part Two – Warding Arrangements

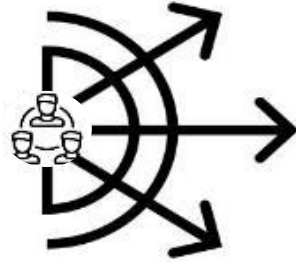
29 March 2022

Review Update
Leigh Usher

Review Process



Part 1:
Councillor Numbers



Part 2:
Warding Arrangements

What does the electoral review determine?

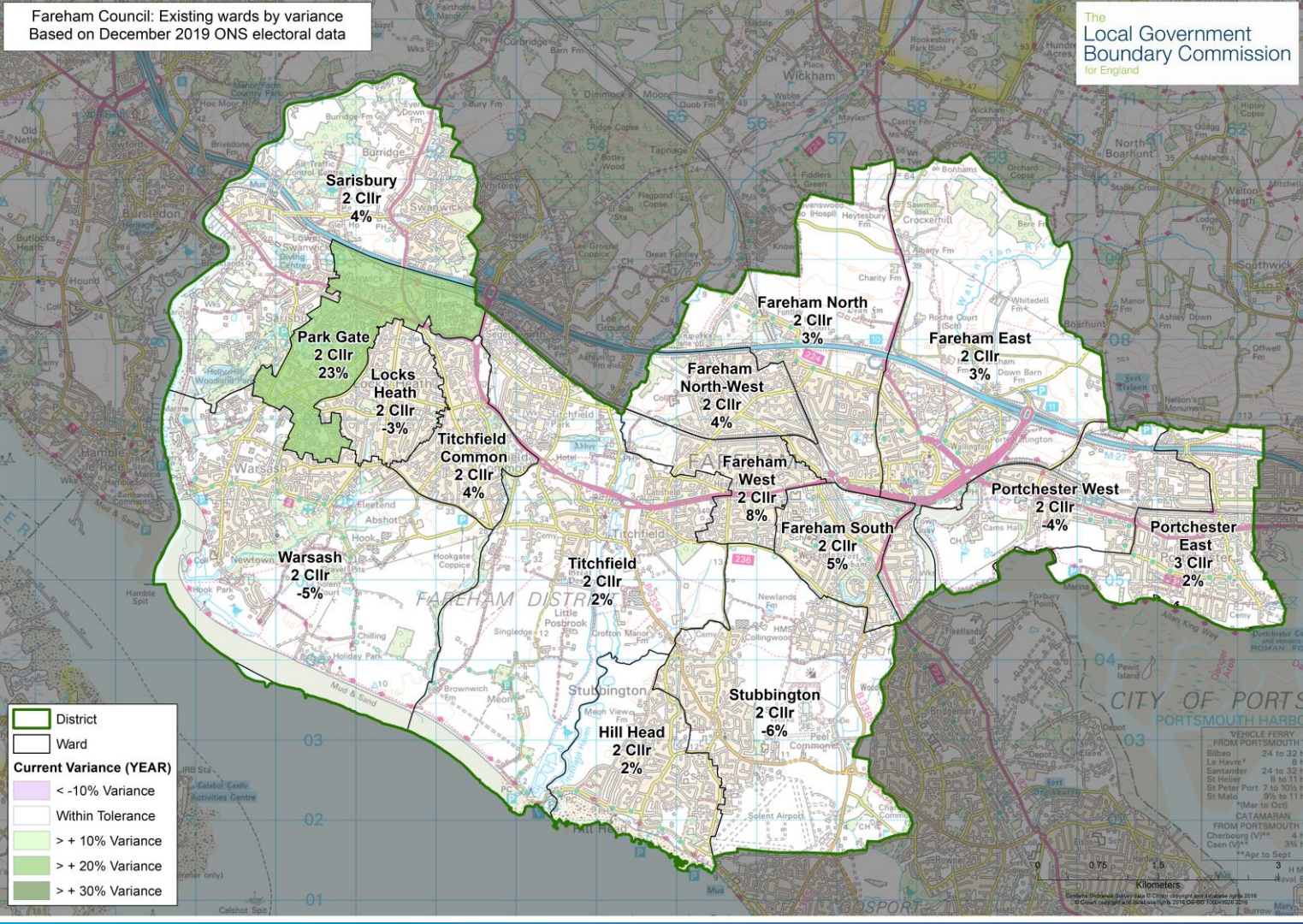
1. Total number of councillors
32
2. Total number of wards
16
3. Number of councillors elected to each ward
2
4. Ward boundaries?
5. Names of each ward?

Part 2 Requirements

A good pattern of wards should:

- Provide **good electoral equality**, with each councillor representing a similar number of voters.
- Reflect **community interests and identities** and include evidence of community links.
- Be based on strong, **easily identifiable boundaries**.
- Help the council deliver **effective and convenient local government**.

Fareham Council: Existing wards by variance
Based on December 2019 ONS electoral data



FBC considerations

- Park Gate currently +23% variance
- Portchester East changes from 3 to 2 councillors
- Additional ward to be created
- Fix the FW polling districts 5,6 and 7 caused by previous County boundary review

Where to start?

Determine electoral variances by Councillor

Recommended Council Size = 32 Cllrs

Current Electorate = 89,046

Total Electorate Forecast = 97,790

	2021	2027
10% fewer electors	2,584	2,750
Perfect Electoral equality per Cllr	2,872	3,056
10% more electors	3,159	3,361

Target electorate per ward

Determine electoral variances by ward

Total Electorate Forecast = 97,790

Recommended no. wards = 16

Average elector per ward = 6,112

	Based on forecast electorate
10% fewer electors	5,500
Perfect Electoral equality per ward	6,112
10% more electors	6,723

Target v new ward forecast

	Per ward
10% fewer	5,500
Perfect no.	6,112
10% more	6,723

Name of ward	number of clrs per ward	Electorate 2021	Variance 2021	Electorate 2027	Variance 2027
Fareham East	2	5,863	-1%	6,314	0%
Fareham North	2	5,534	-7%	7,635	21%
Fareham South	2	5,454	-8%	5,782	-8%
Fareham West	2	5,347	-10%	5,636	-11%
Fareham North West	2	5,565	-6%	5,825	-8%
Hill Head	2	5,806	-2%	6,163	-2%
Locks Heath	2	5,531	-7%	5,985	-5%
Portchester East	2	8,721	47%	9,323	48%
Park Gate	2	6,968	17%	7,511	19%
Portchester West	2	5,570	-6%	5,872	-7%
Sarisbury	2	5,987	1%	6,314	0%
Stubbington	2	5,399	-9%	5,730	-9%
Titchfield Common	2	5,954	0%	6,303	0%
Titchfield	2	5,760	-3%	6,133	-3%
Warsash	2	5,587	-6%	7,264	15%

Changing ward boundaries

Start in the west...PG

Look at the east... PE

What gets squeezed in the middle? FN FE etc

Electorate Numbers

Add Local Plan Development Sites

Polling Districts GIS (fareham.gov.uk)

Member involvement

- Informal briefing with Group Leaders
- Briefing with LRA Chairman
- MWG (SW, TD, MF, PB, KT) input via regular updates
- LRA committee (scheduled 29 March)
- FBC submission doesn't legally need to be approved by Council

Review Timeline



Final notes

- Concurrent Parliamentary Boundary Review!
- Coterminous County division boundaries
- Submission must include reasoning – this cannot relate to local political preference

Any Questions?